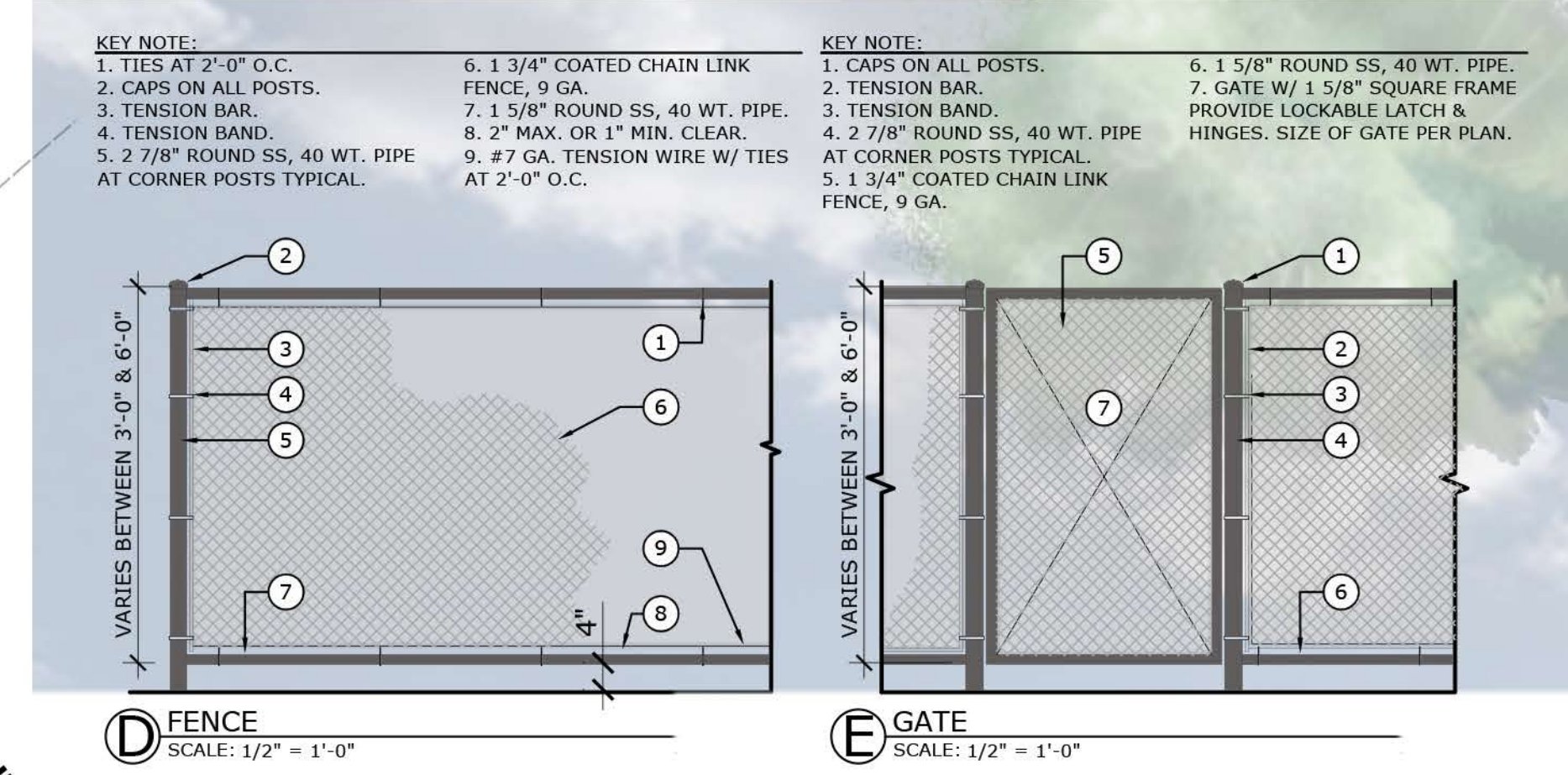


- KEY NOTE:**
1. PAINTED MASONRY BLOCK.
  2. CONCRETE FOOTING PER STRUC. ENGINEER.
  3. FINISHED GRADE (BERM WHERE APPLICABLE).
  4. MORTAR CAP.
  5. PRECAST CONCRETE CAP.
  6. MASONRY COLUMN W/ PAINTED MASONRY BLOCK.
  7. ASPHALT DRIVE LANE / PARKING.
  8. COURT LIGHTING W/ OUTLET AT LIGHT POST (BY OTHERS).
  9. SHADE STRUCTURE (BY OTHERS).
  10. 6'-0" TO 8'-0" TALL MASONRY WALL.
  11. 4'-0" TALL FENCE BETWEEN COURTS.
  12. BIKE PARKING.
  13. 2'-0" TALL BERM WITH 6'-0" TALL WALL.
  14. ORNAMENTAL BLOCK.
- \* = VERIFIED / DESIGNED BY STRUC. ENGINEER

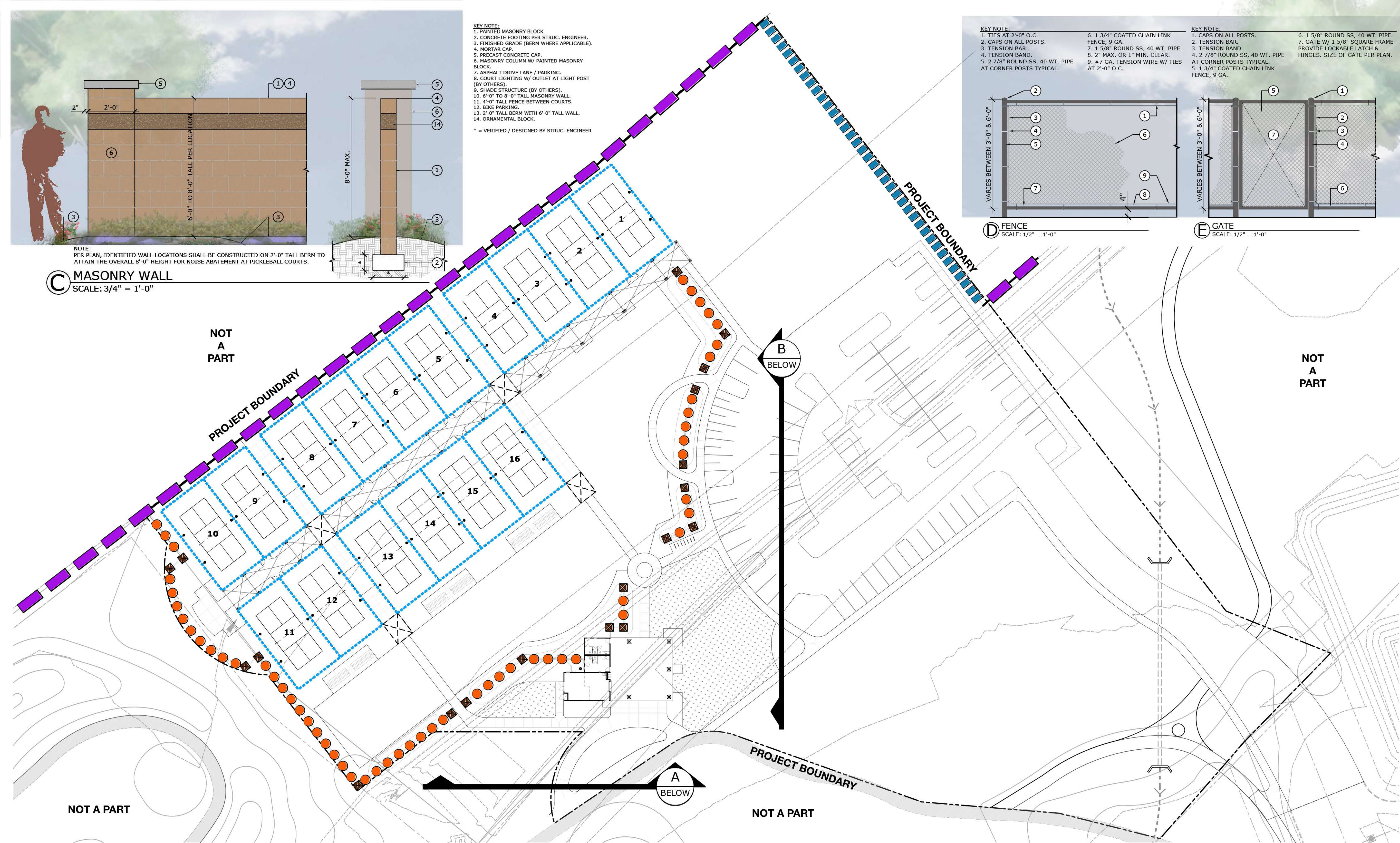
**C MASONRY WALL**  
SCALE: 3/4" = 1'-0"



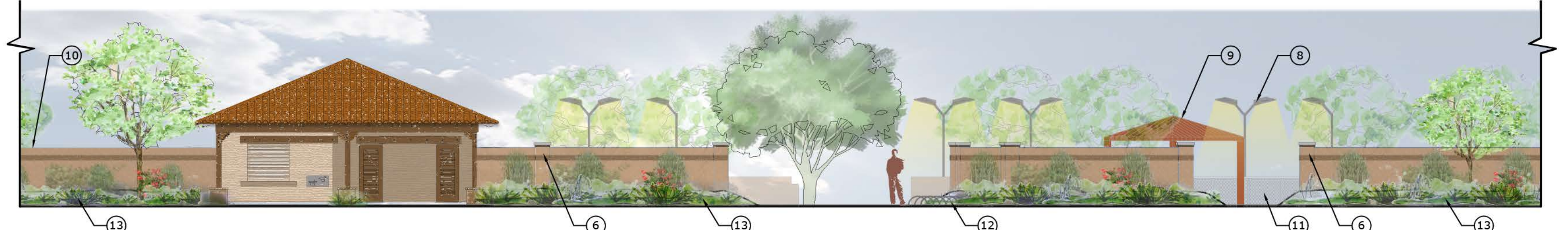
**D FENCE** SCALE: 1/2" = 1'-0"  
**E GATE** SCALE: 1/2" = 1'-0"

**WALL LEGEND:**

- EXISTING WALL TO REMAIN.**  
(ADDITIONAL CMU COURSES MAY BE ADDED AS DESIRED BY OWNER TO AN 8'-0" MAX HEIGHT.)
- NEW 6'-0" TALL WALL ON 2'-0" TALL BERM (OPTIONAL).**
- DETAIL "C"**
- NEW 6'-0" TALL WALL TO MATCH EXISTING.**  
(ADDITIONAL COURSES MAY BE ADDED AS DESIRED BY OWNER TO AN 8'-0" MAX HEIGHT.)
- 2' X 2' MASONRY COLUMN AT CORNER / TRANSITIONS.**
- DETAIL "C"**
- FENCE / GATE AT COURT**
- DETAIL D & E**



**A ELEVATION LOOKING NORTH**  
SCALE: NTS



**B ELEVATION LOOKING WEST**  
SCALE: NTS

**PEBBLECREEK**

**CONCEPTUAL WALL LOCATIONS / DETAILS AT PICKLEBALL COURTS**

OCTOBER 10, 2020; REV 12-22-2020

